

REDBRIDGE **LIFE**

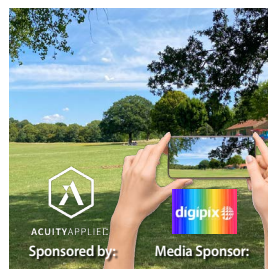
JOIN OUR
WHATSAPP
CHANNEL

page 3



PHOTOGRAPHY
AWARD
WINNERS
ANNOUNCED

pages 4 & 5



OFSTED GRADES
CHILDREN'S
SERVICES
OUTSTANDING

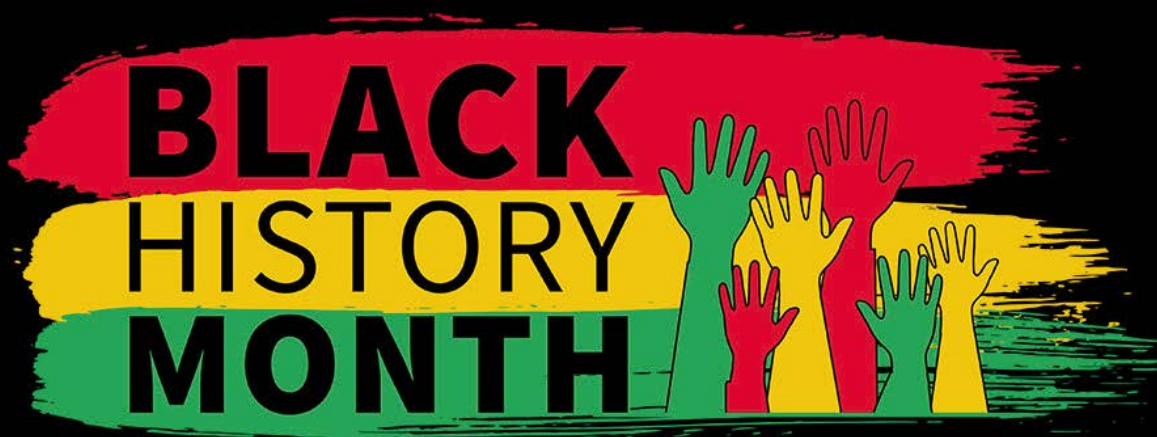
page 17



Mercato Ilford opens Food, fun and flavours, page 14



BLACK HISTORY MONTH



Redbridge Libraries are hosting a programme of events and activities for Black History Month during the month of **OCTOBER**

- **Arts and Crafts**
- **Author Talks**
- **Book Chat**
- **Storytelling**
- **Workshops**
- **Black British Ballet Performance**



For the full programme of events visit:
visionrcl.org.uk/blackhistorymonth



London Borough of
Redbridge 

HAVE YOUR SAY AT COUNCIL MEETINGS

All meetings will be held in person at the Town Hall, High Road, Ilford, IG1 1DD. Visit www.redbridge.gov.uk for information, agendas, and links to view online.

Council Meetings

Thursday 19 September **7.15pm**, Thursday 21 November **7.15pm**

For information on how to ask a question at meetings, please email councilquestions@redbridge.gov.uk and for additional public meeting dates, visit www.redbridge.gov.uk/about-the-council/public-meetings

Cabinet Meetings

Thursday 12 September **7.15pm**
Monday 14 October **7.15pm**
Tuesday 12 November **7.15pm**

Planning Committee

Thursday 10 October **7.15pm**
Monday 25 November **7.15pm**

Licensing Committee

Tuesday 15 October **7.15pm**

External Scrutiny Committee

Wednesday 13 November **7.15pm**

Overview Committee

Tuesday 8 October **7.15pm**
Tuesday 5 November **7.15pm**

Health Scrutiny Sub-committee

Tuesday 10 September **7.15pm**
Thursday 7 November **7.15pm**

For all other meetings, please check the website above.

Contact: Jilly Szymanski/Antoinette Davis **Telephone:** 020 8708 2465 / 2352 or
Email: antoinette.davis@redbridge.gov.uk or jilly.szymanski@redbridge.gov.uk

Produced by Redbridge Council

The editor can be contacted via email, at redbridge.life@redbridge.gov.uk

London Borough of Redbridge, PO BOX No.2, Town Hall, 128-142 High Road, Ilford, IG1 1DD.

Redbridge Life is published quarterly. Redbridge Council does not accept responsibility for any goods or services offered by advertisers. Publication of an advert does not imply endorsement of any goods or services offered.

Distribution problem?

Email redbridge.life@redbridge.gov.uk

To see advertisement rates, visit www.redbridge.gov.uk/redbridgelife

Next issue out in December



LEADER'S MESSAGE

Welcome to the Autumn edition of Redbridge Life

Dear neighbour,

Having grown up locally and raised my family in Redbridge, becoming the Leader of the Council in July was a true honour, and I want to thank everyone who has reached out with kind words of support.

Having served as a local councillor since 2014 and as Deputy Leader since 2018, I know what a special place Redbridge is and how vital it is that we continue to work together, each playing our part to keep Redbridge green, clean, and safe.

As the Leader of our council, I'll be working with partners in the Police, Greater London Authority and the local community, including businesses, to drive investment, deliver new leisure facilities, and make sure our borough is the best place to live, work, and visit.

It's been a busy few months in our borough, and I'm proud to see our investment in the town centre paying off, with Mercato Metropolitano food market opening over the summer and thriving with thousands of local people visiting every week to sample delicious cuisine from around the world (p.16).

Our council has also successfully secured funding from the Greater London Authority to create a stunning riverside walking path linking Ilford to Woodford and Wanstead. We'll be sharing more on the plans in the coming months so keep an eye on www.redbridge.gov.uk for updates.

It truly has been a summer of success with students achieving yet more fantastic A-Level and GCSE results, thanks to our excellent local schools and colleges, and their staff. I saw first-hand, the excitement of our hard-working young people when I visited Loxford School on results day.

Applications are now open for school places. We're holding an online session on how to apply for school places on 9 September at 6pm. Keep an eye on our social media accounts for the Teams joining link.

We've received two 'Outstanding' reports from Ofsted. Our Adult education college, Redbridge Institute, is the only local authority funded college in the country rated 'Outstanding' by Ofsted (p.26).

Our brilliant Children's Services team also achieved an 'Outstanding' Ofsted rating. We're one of only three local authorities in the country rated 'Outstanding' for Children's Services across the board (p.17).

As schools return for the autumn term and the weather gets colder, there's still plenty to do in Redbridge over the weekends. Visit www.redbridge.gov.uk/discover for all you need to know about weather-safe activities and great days out for all the family.

All the best,



Councillor Kam Rai
Leader of Redbridge Council

Be the first to know **Whats'App-ening**

Get the latest from Redbridge Council through our new WhatsApp channel.



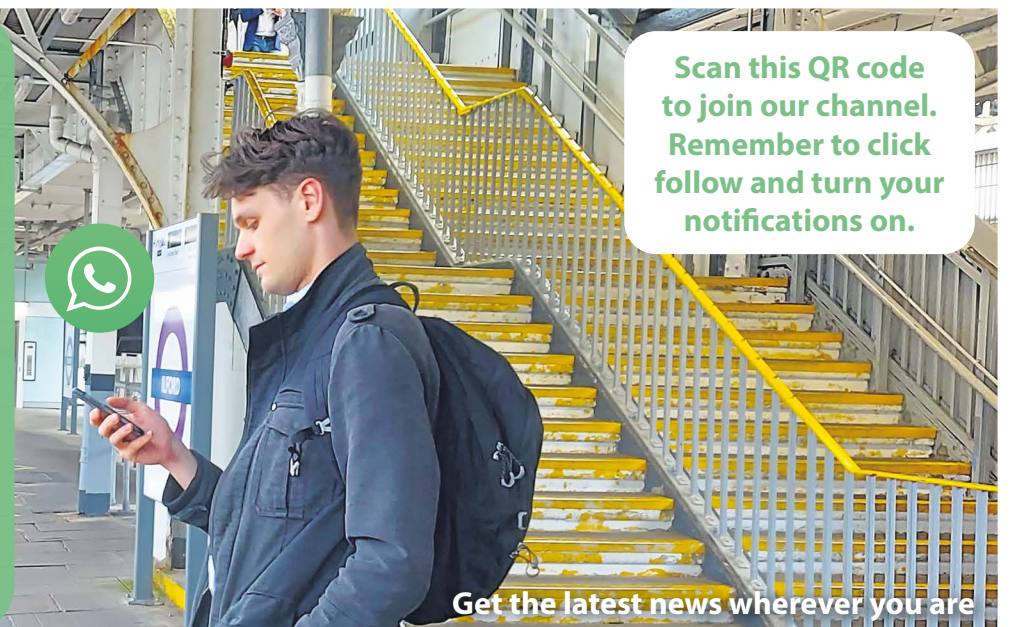
Find out what's happening with key council services, be the first to see our news stories, and find out about local events and leisure activities across the borough.

Join our WhatsApp channel and find out about your local area and services that could help you.

It's secure, your details are kept private, and neither the council nor other subscribers can see your phone number or any other information.

Joining the channel is as easy as 1,2,3...

1. **Scan** the QR code
2. Once the channel opens, click '**Follow**' on the top right
3. Make sure you click the bell icon in the top right to **turn on notifications**



Scan this QR code to join our channel. Remember to click follow and turn your notifications on.

Get the latest news wherever you are

Redbridge Photography Award winners revealed!

Over 350 pictures have been judged, but there can only be four winners...

Hundreds of stunning pictures were submitted by residents for our photography competition. The quality of pictures made judging hard, but we have finally selected the winners who captured the beauty of our borough.

Stunning photos of our beautiful borough were entered by local people, across four categories: Redbridge Places, Redbridge Nature, Redbridge People and Redbridge Young People's Award.

You can view the winning pictures, and a collection of other submissions, at Redbridge Central Library, between 23 September and 7 October. Pictures will also be available to view on our social media channels, so make sure you're following us!

Thank you to everyone who took part, and to our sponsors, Acuity Applied and Digipix Ilford, who helped make this competition a success.



Exhibition

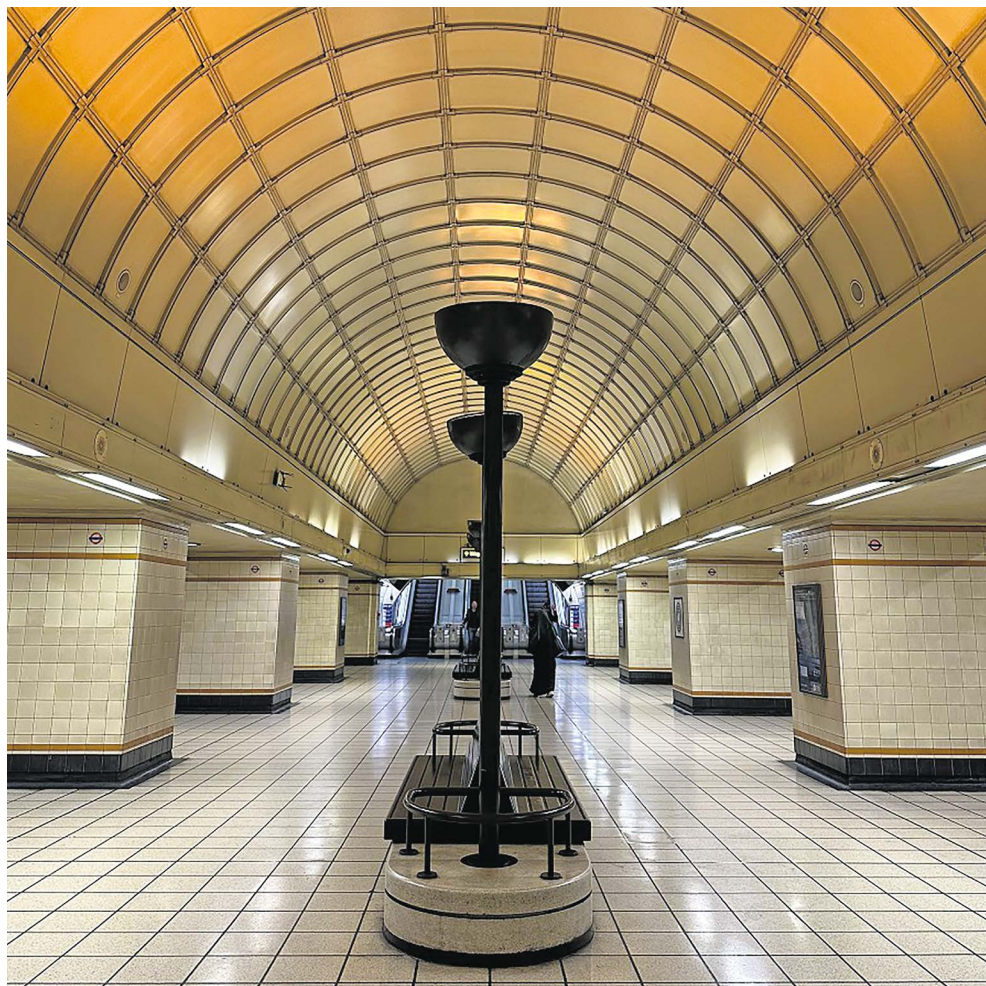
Redbridge Central Library,
Clements Road, Ilford, IG1 1EA
23 September to 7 October

Hisashi Coffee Company,
4-6 Cranbrook Road,
Ilford, IG1 4DJ
11 to 25 October

 @redbridgecouncil
  @RedbridgeCouncilOfficial
  X (Twitter): @RedbridgeLive
  TikTok: @redbridgecouncil

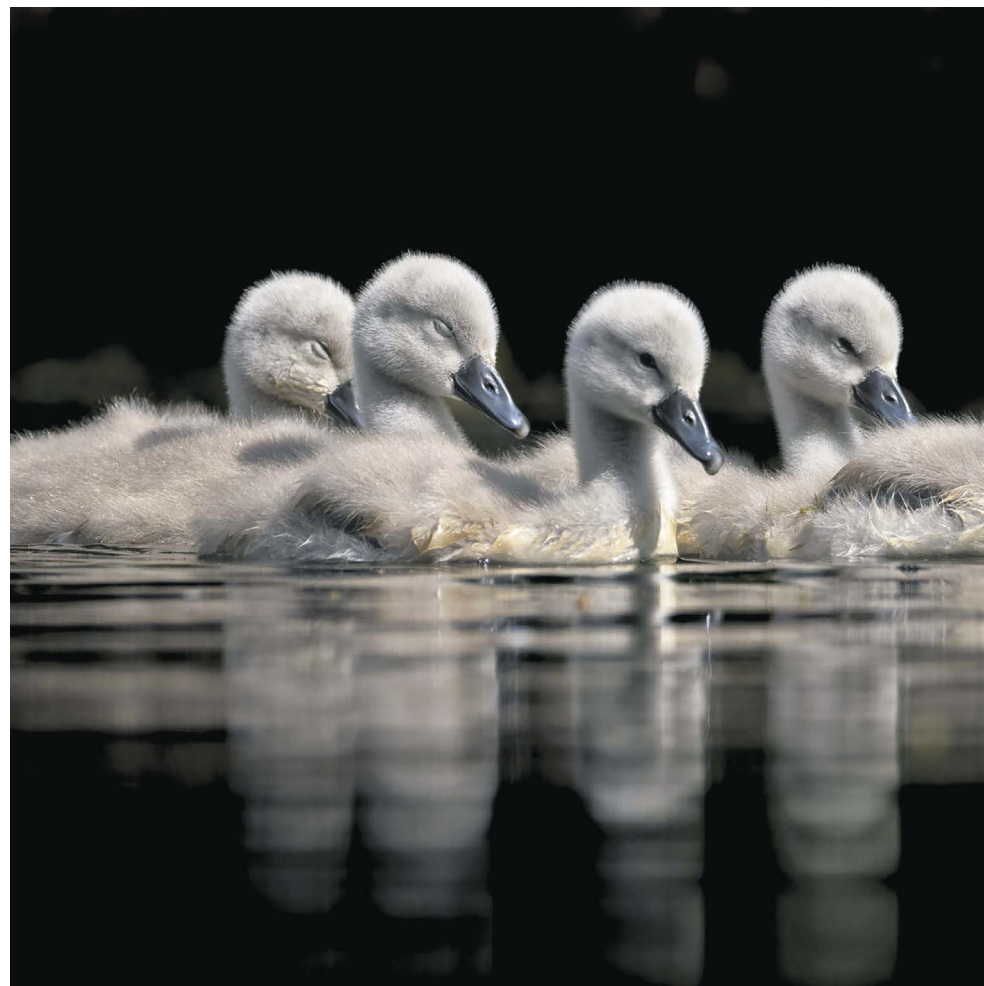


The winner of the **Redbridge Places**
category is...



... **Sue Rosner**, who captured a picture of Gants Hill underground station.

The winner of the **Redbridge Nature**
category is...



... **Callum Church**, who snapped cygnets in Valentines Park.

The winner of the **Redbridge People**
category is...



... **Paul Fox** from www.eventcapture.co.uk, who took a picture of two people hugging during the Black History Month Awards.

The winner of the **Redbridge Young People's Award**
category is...



... **Amber Madeley-Fox**, who took a shot of Redbridge Lakes in Woodford Green.

Update on Broadmead Road Bridge

Redbridge urgently needs funding to help repair the 90-year-old bridge.



Broadmead Road Bridge will remain closed for the foreseeable future

Many of you have been closely monitoring the situation concerning the closure of Broadmead Road Bridge in Woodford.

Upon discovering substantial structural defects last year, we immediately closed the bridge to prevent serious injury or loss of life.

We understand the significant inconvenience the closure is causing to local communities. Unfortunately, the bridge has reached the end of its life, and repairs are expected to cost tens of millions, money we simply don't have.

Here is a quick update on the work we've completed behind the scenes:

- Commissioned a principal inspection report and hammer tap testing to determine the structure's current condition
- Conducted concrete testing on the bridge
- Installed drainage to ensure water is kept away from the bridge to avoid further deterioration
- Carried out work to ensure cyclists and motorcycles can use the bridge in the near future

A report outlining the options for reopening the bridge will be presented to the council for consideration when completed.

We will do our utmost to resolve this situation and restore Broadmead Road Bridge to its former state. We will also continue to actively seek the necessary funding through ongoing discussions with central Government and Transport for London.

We need your support too. Please sign our petition, at www.redbridge.gov.uk/have-your-say/broadmead-road-bridge

Valentines lido gets the green light

Valentines Park will be home to London's first new lido in decades.

A new lido in Valentines Park, the first of its kind in London for decades, was granted planning permission this summer. Work to appoint contractors is underway and construction will begin later this year.

The lido is expected to open in Autumn 2025. This brand new state-of-the-art pool will be built close to Valentines Park's original lido which shut down in 1995.

The new lido, which will use new technology to ensure it's sustainable, will provide local people, families and visitors to the borough, with a fun and social place to exercise outdoors, while boosting the local economy and restoring the heritage of the award-winning Valentines Park.

For more information and updates on the lido, visit engage.redbridge.gov.uk/valentines-lido

The new lido features will include:

- 🌊 25-metre six-lane swimming pool
- 🌊 Changing facilities
- 🌊 Children's splash pad
- 🌊 Café
- 🌊 Gym
- 🌊 Dance/exercise studio

Cllr Kam Rai, Leader of Redbridge Council, said



"We're investing in our borough so local people have a choice of budget-friendly leisure experiences on their doorstep. Our parks now have refurbished tennis courts, we've invested in new cricket pitches, and we've revamped Hainault Forest and Foxburrows Farm. We're planning in a new climbing centre and golf driving range to help people have fun and be active. The lido will be another jewel in Redbridge's crown, and means local people will have the ultimate choice in affordable, fun leisure activities."



The new lido will boast a 25-metre six-lane swimming pool

Empower a child Foster for Redbridge

LOCAL COMMUNITY
Fostering
REDBRIDGE

Imagine having the power to change
a young person's life for the better.

The power to re-shape a future.

There are over 300 children in Redbridge who
are unable to stay with their families each year.
You could be the one to transform a life and
provide the change that they need.

call 020 8708 6068
visit www.redbridge.gov.uk/fosteringlife



Funded by
UK Government



Are you looking after a child who is not your own?

London Borough of
Redbridge 



- is the child under 16 (or 18 if they have a disability)?
- are you NOT the child's step parent, sibling, aunt, uncle or grandparent? This also includes host families to overseas students
- do you plan to have the child with you for more than 28 days?
- this is called '**private fostering**' and we must be LEGALLY notified to ensure the child is safe

Please contact Redbridge Children's Services

020 8708 3885 CPAT.Referrals@redbridge.gov.uk

or visit www.redbridge.gov.uk/private-fostering for more information

Recycle Week: 14–20 October

Get top tips and advice on how to reduce your waste, and 'recycle right'.

One of the easiest ways to help tackle climate change is to reduce the amount of household waste being produced in the borough, and recycle as much as we can of whatever waste is left. Learning to recycle right is important, because wrong items in the recycling can contaminate the whole load, making it all unrecyclable.



For Recycle Week, 14–20 October, our neighbourhood, education and engagement team will be on hand to speak to community, faith or social groups about recycling, and easy ways to reduce your waste. To request a free session, email ourneighbourhood@redbridge.gov.uk

Find out more about reducing, reusing and recycling, at www.redbridge.gov.uk/our-streets

Green Garden Waste collections will stop from Autumn

Week 1 Collections end on Friday 25 October

Week 2 Collections end on Friday 1 November

Collections will resume again in Spring.

OUR STREETS
Help us create great streets and neighbourhoods



Alejandro, 8, and his brother Leonel, 11, from Barkingside, are keen recyclers. Alejandro said

"By recycling our plastic and paper, we create a healthier planet. We have to do our bit to make sure we are taking care of where we live, otherwise we are hurting the earth."



Building a flood-resilient Redbridge

Did you get a chance to come along to our Flood Awareness Roadshows?

Our Flood Awareness Roadshows attracted people from all around the borough, and were packed with information and advice on protecting local homes from flash flooding. There were also opportunities to find out about the extensive works taking place to make Redbridge resilient to flooding.

Westwood Recreation Ground

A major flood alleviation scheme is currently underway at the Seven Kings site, which has previously been prone to flooding. Recent works include installing a drain that can take overflowing water back into the culvert.



Works underway at Westwood Recreation Ground

If you didn't get a chance to come along, here's a quick update on some of our latest projects:



Rain gardens

We have installed more than ten rain gardens and have plans underway for more in the borough. These eco-friendly water drainage systems, featuring plants and shrubs, are designed to absorb rainwater and drain it away slowly to stop sewer systems becoming overwhelmed.



Rain garden



Hydrorock

The innovative Hydrorock system is being trialled on Seven Kings High Road. Acting like a sponge block under the road, it absorbs water from heavy rainfall and slowly releases it into the sewer system.

Water butts

Water butts are being rolled out to some Clayhall homes under a trial with Thames Water. They connect to your drainpipe, capturing and storing rainwater falling from your roof, and preventing it from entering drains and sewers. Stored water is ideal for gardening or washing the car.

Find flood awareness advice, information and tips, at www.redbridge.gov.uk/flooding

Let's keep you moving on our roads

We're investing heavily in resurfacing and repair programmes to improve road surfaces. Find out about our latest projects.

CLEANER
Redbridge



Road resurfacing programme

We're putting into action a £3million road resurfacing programme, which includes major works across several roads in the borough, alongside smaller initiatives. The programme kickstarted with a trailblazing road resurfacing project at Lodge Hill, in Ilford. The project utilised a revolutionary new product known as ACLA® which was incorporated into the asphalt to make the road resurfacing process greener. We were the first to trial it in London.

Pothole repairs: The Injection Patcher is back in Redbridge

Following its successful trial last year, we brought the Injection Patcher back to Redbridge for rapid pothole repairs. This pioneering machine fixes potholes in under three minutes. We aim to repair thousands more potholes through the council's resurfacing programme, between this machine and the traditional pothole repairs undertaken across the borough.

To report a pothole in the borough, go to www.redbridge.gov.uk/report-it/report-streets-and-highways or report it quickly and easily on the **Love Clean Streets app**.

To find out more about our resurfacing programme, go to www.redbridge.gov.uk/roads-and-pavements/highways-maintenance-and-resurfacing-information

Help yourself to cleaner air



Redbridge is a great place to live, and we want to make it even better by helping reduce your exposure to air pollution.

Head to <https://engage.redbridge.gov.uk/our-air-redbridge> and download your **Healthy Lung Habits** checklist. It's all about making simple changes both inside and outside the home, to keep the air you breathe cleaner.



#WeCareForOurAir

Department
for Environment
Food & Rural Affairs

London Borough of
Redbridge



London Borough of
Redbridge

Is your home or rented property cold and difficult to keep warm?

The council are offering **Go Green Grants** to help homeowners and landlords improve the energy efficiency of their properties through the installation of low-carbon heating improvements. This could help keep homes warmer and save money on energy bills.

The scheme can offer the following measures.

- Internal wall insulation
- Underfloor insulation
- Loft insulation
- Solar panels
- Heating and temperature controls
- Hot water cylinders (replacement or insulation)
- Glazing

This is not an exhaustive list and will depend on the recommendations made by our surveyors.

If measures selected are above the maximum threshold of £4,500 the difference will need to be paid for in advance of the works commencing.



To make an application please visit
www.redbridge.gov.uk/housing/private-rentals/go-green

REDBRIDGE REWIND

Exploring the Rich History of our Borough

From home-sweet-home, to home of Bake Off

Our borough is home to impressive buildings and architecture, as captured in our Redbridge photography competition. Some of these buildings have a rich and interesting history.

Valentines Mansion was built in 1696 for Elizabeth Tillotson and her family, after the death of her husband, the Archbishop of Canterbury. At that time, the new brick house stood in open countryside. It remained home to wealthy middle-class families and their servants until 1906.

Some notable residents include Sir Charles Raymond, who purchased the mansion in 1754. He renovated Valentines Mansion in the 1760s, giving the house the Georgian appearance that we see today.



Valentine's the Seat of Charles Raymond Esq.

Drawing of Valentines Mansion following renovation by Sir Charles Raymond

Valentines Mansion has a 'Raymond Room' which hosts memorabilia from Sir Charles Raymond's life, which includes a replica of the painting 'Southwark Fair' by William Hogarth. This was purchased by Raymond around the 1760s and hung in the Mansion during the time he lived there. From the window in this room, you can see the grand Magnolia Grandiflora planted in 1855 which has become one of the most iconic features of the Mansion today.



Portrait of Sir Charles Raymond

The last family to occupy the Mansion were the Inglebys. Mrs Ingleby was a philanthropist and took interest in the welfare of her less-fortunate neighbours. She allowed the gardens to be used for local tea parties and fetes. Following the death of Mr Ingleby in 1886, Mrs Ingleby sold about 48 acres of the estate to the then Ilford Urban District Council for the creation of Central Park, which opened in 1899 on former farmland, meadow and brickfields.



Portrait of Mrs Ingleby in 1902

When Mrs Ingleby passed in 1906, her son donated the American Gardens (east of Valentines Mansion) to the Council as a memorial to his mother. It was at this time that the park was renamed Valentines Park.



Valentines Estate Workers in 1900

The Council acquired the house in 1912. Since then, the Mansion has been home to wartime refugees, a hospital, a public health centre, and a council housing department. It was also a venue for the TV show the Great British Bake off in 2013.



Middlefield farm in Valentines Mansion gardens in 1900

Earlier this year, Valentines Mansion marked its 15th anniversary of being open to the public following a restoration from 2006 to 2009, with funds from Redbridge Council and Heritage Lottery.

You can visit Valentines Mansion for free on Sundays and Mondays. You can also get married at the iconic Georgian house. Find out more, at www.valentinesmansion.com



Garden Party at Valentines Mansion in 1910, from Redbridge Local Studies and Archives

Why do I need to register with a General Practitioner (GP)?



A GP is a **local family doctor** and usually your first contact if you have a health problem.

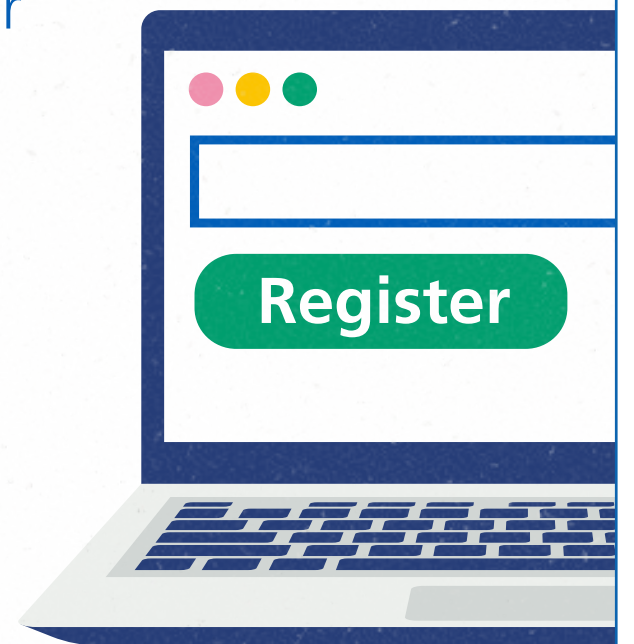
You need to be **registered with a GP** to get medicine, hospital referrals, tests and treatments as well as invitations to vaccinations and cancer screening.

Anyone in England can register and be seen by a GP **free of charge**.

Appointments are available **seven days a week**, including evenings and weekends.

It is important to register with a local GP **as soon as you can** when you move house or when you arrive in England, so you can see the GP or a member of their practice team when you are sick.

If you need to see a GP, but have difficulty speaking or understanding English, tell the staff at the GP surgery. They will be able to arrange for an interpreter. **You will not be charged**.



How to register

You can register with any GP in your **local area** as long as you are in their catchment area.

You **do not need** a permanent address, to provide proof of address or immigration status, ID or an NHS number.

You can register by going into the practice and filling out a form or you can register online.

Find out how to register in person and online and how your GP can help you: northeastlondon.icb.nhs.uk/GP



Parents and guardians

It is **very important** that babies and children are registered with a GP so they can easily get the help they need, including vaccines that protect them from **serious diseases**. This usually means filling in a separate form for them.





Let us know about **YOUR LOCAL HERO!**

Our borough is full of kind and wonderful people who do great things for their local community, but we don't always get to hear about it. We think it's time to shine a spotlight on the everyday heroes that help make Redbridge a great place to call home.

Meet Jan, the litter picking hero from Clayhall



Jan with Park Ranger Robert Batey

Have you met Redbridge's 'Duchess of Claybury'? Jan, from Clayhall, was given the fond title by parkgoers after becoming a litter picking hero for Claybury Park.

Describing the park as a "local gem on people's doorstep" Jan, aged 70, has become a familiar, welcoming face to many who visit it.

Jan can be spotted most mornings with a litter picker in hand, bags ready for filling, and a warm, friendly smile as she scours the park collecting discarded rubbish.

Having lived in the borough all her life, she has seen the park become a local treasure and lifeline to many in the community, especially during the height of the Covid-19 pandemic.

Jan, said "It's wonderful to see the park being used by so many over the years, but sadly I've noticed more litter too. Even though there are plenty of bins in the park,

unfortunately not everyone uses them. The majority of people I meet are great at looking after the park, and really value and respect it. It's a shame about the small minority who can't see how lucky we are to have this wonderful open space and simply leave their litter anywhere they happen to be."

Jan was inspired to take action against the litterbugs and contacted the park rangers, who helped set her up as a volunteer litter picker. For several years now, she has dedicated hundreds of hours a year towards helping keep the park clean and tidy.

"I can fill 1-2 bags with rubbish every time I go. I've even inspired others to get involved! It's also a very sociable activity. Over the years I've met many lovely people and made some good friends. Half of the pleasure of what I do is getting out and talking to people. It's good exercise and just so rewarding."

And when she is not litter picking, Jan can be found taking part in nature conservation days led by park rangers, with other volunteers. From cutting back brambles, bushes and shrubs to helping paint park gates, it seems there's hardly a moment that passes that Jan isn't helping look after her beloved park – it's easy to see why she is affectionately called the Duchess of Claybury.



Jan helping at a nature conservation day at Claybury Park



Jan litter picking

Heaping praise on Jan, Claybury Park Ranger Robert Batey, said "The work Jan does in Claybury Park is simply amazing. She's always in there, litter picking, cutting odd bits back and reporting any problems that arise. I think I can speak for everyone when I say that we're all incredibly lucky to have her!"

Please help Jan and always take your litter home. For more information about Redbridge Parks and volunteering opportunities, go to www.visionrcl.org.uk/parks-outdoor-spaces

Do you know someone who deserves to be recognised as an Everyday Hero?

Let us know so we can give them a shout out in Redbridge Life!
Email community@redbridge.gov.uk with the catchline "Everyday Hero".

What's on our doorstep



Redbridge is exploring our town centres as part of a new feature. Next up is Seven Kings.

One of the most striking features of Seven Kings is its undeniable sense of community. It's where people come to set up a home and become part of a close-knit neighbourhood.

Walking down the High Road, you'll immediately feel the multicultural heart of this bustling East London suburb. With a variety of restaurants, many specialising in South Asian cuisine, and trendy bubble tea spots dotted in between, Seven Kings is a melting pot of cultures.

One thing is clear: Seven Kings is open for business regarding development. The property market is thriving and the area is constantly evolving, offering new opportunities, both commercial and residential.

On the High Road, hundreds of homes are being built, with local parks minutes away. These will be snapped up by young professionals looking to get their foot on the housing ladder. It is the perfect choice for those who want accessibility to central London while also getting a slice of suburban life.

Connectivity is king, in Seven Kings. London's West End is a mere 35 minutes away, thanks to the Elizabeth Line link at Seven Kings Station.

There are also many places of worship. There aren't many areas in London where you will find a Gurdwara, Mosque, and a range of Christian churches in a little under a mile radius.



The Elizabeth Line has proved a 'game-changer'

Make sure you jump on the Lizzy line and check out Seven Kings.

Floros Preris, owner of The Barber Stop, said "I've been here for 26 years now, and things have never been busier. The Elizabeth Line has been a game-changer. We now have guys coming in for haircuts who've moved here from West London."



Floros feels Seven Kings is moving with the times

Ubayd Hamid is the manager of Chapters, a local diner. He said "Everyone is so friendly. People are always moving to the area, so business is doing well."



Ubayd outside Chapters



Jack Patel moved to Seven Kings 20 years ago and says it is the best place to raise a family



Seven Kings even has an Irish pub!



The property market is booming

Mercato Metropolitan opens in the

Located in the town centre, not far from Ilford Lane’s buzzing restaurant scene, this opening has rubber stamped Ilford as a destination for foodies in East London.

This summer, Ilford welcomed the opening of Mercato Ilford, the first sustainable community food market in East London.

Mercato Ilford is located in a transformed car park in Ilford town centre, and it’s open seven days a week. Local traders cook up delicious dishes from around the world, and there’s also a community space which offers regular cooking classes, live performances, health and fitness sessions, and more.

The 17 traders, whose produce has been farmed sustainably and who offer halal options, cook up authentic Ethiopian, Jamaican, Mexican, Indian and Turkish food. Every trader offers a lunchtime £5 meal deal from Monday to Friday, alcoholic and non-alcoholic drink options, desserts and sweet treats – there is something to suit everyone’s taste buds.



Leader of the Council, Cllr Kam Rai, said

“The opening of Mercato Metropolitan, right in the heart of Ilford is a shining example of regeneration, helping to create employment for local people, bringing in new opportunities for local traders, and encouraging visitors into our town centre.



“This marketplace complements other developments designed to entertain and support local people, including the planned lido, the renovation of Hainault Forest and Foxburrows Farm, and a new golf driving range in the pipeline. Mercato, just a short stroll from the Kenneth More Theatre, the historic town hall and Space Studios Art Gallery, rounds off our cultural quarter, and will be enjoyed by people who live and work in Ilford, and no doubt many more from further afield.”

Come and try a range of cuisines from local vendors

heart of Ilford



The venue is part of our 'Spark Ilford' regeneration project, designed to make Ilford's Cultural Quarter a destination for food, art and entertainment.

In 2018, the Council secured a £1.8 million grant from the London Economic Action Partnership and Mayor of London's Good Growth Fund, and a £70 million public fund which is supporting urban regeneration projects, such as Mercato Ilford.

If you've got little ones aged under five, bring them along for a fun Frog Prince Baby Class at Mercato Ilford, every Tuesday at 11am for 45 minutes. Kids can enjoy nursery rhymes, practice their ABCs and counting skills.



Andrea Rasca, the Founder and Chief Executive Officer of Mercato Metropolitan, said

"Mercato Ilford is more than simply a place to eat. It has social impact programmes and community plans in place to help tackle food poverty, educate on the importance of good nutrition and help address socio-economic issues. Our mission is to build more inclusive communities and sustainable local food systems. Ilford's Cultural Quarter is the perfect location, providing ample opportunities to experience cultural diversity, historic architecture, and art."

Visit Mercato Ilford market on:

Monday – Thursday 12pm – 11pm

Friday – Saturday 12pm – Midnight

Sunday 12pm – 9.30pm

Coffee shops and Badiani ice-cream stores are open:

Monday – Friday from 8am

Saturday – Sunday from 9am

Find out more about Mercato Ilford on their website, at www.mercatometropolitano.com/mm-ilford and give them a follow on Instagram @mercato**metropolitano**



A summer to remember!

Children across the borough enjoyed a summer of fun, gaining practical skills with free meals, through the HAF programme.



Kids can get stuck into various activities

The Holiday Activities and Food (HAF) programme, launched in 2018, provides thousands of eligible children across Redbridge with fun activities and free hot meals over the Christmas, Easter, and summer holidays.

It also offers exciting self-development activities like cooking, gardening, archery, talent shows, IT skills and podcasting.

One parent/carer said, "The diverse range of activities helped my daughter in various ways. Ice skating helped improve her balance and coordination, cooking taught her valuable culinary skills and the importance of following instructions, bowling provided a fun way to engage in friendly competition, and gardening allowed her to connect with nature."



Hands up if you want to take part

Our HAF providers are committed to introducing new and engaging activities for each school holiday. Our dedicated provider, N-Gage, said "We empower children and young people with a wide range of skills, knowledge and new experiences that inspire and feed their aspirations."

HAF is funded by the Department for Education and is available for local children who are in Reception up to Year 11, and in receipt of benefits-related free school meals. There are limited places for vulnerable children through professional referrals.

To find out more, please visit our website, at www.redbridge.gov.uk/haf or email haf@redbridge.gov.uk or call the FIND helpline on 020 8708 6220.

Arts Festival

DAY OF THE DEAD

A family friendly arts festival celebrating life & remembering loved ones! Join Redbridge Libraries for:

Arts, music, dance, face painting, storytelling and so much more!

Thursday 31 October
Wanstead library

Friday 1 November
Redbridge Central Library

From 12noon onwards on both days

For more information visit:
visionrcl.org.uk/dayofthedead

Vision
Redbridge Culture & Leisure

working towards
child friendly
Redbridge

A CAREER WITH

OVER 300 ROLES

Join Essex Police

ESSEX POLICE #FITTHEBILL

Protecting and serving Essex

Visit the Essex Police website today

We're Outstanding!

Redbridge Council is one of only three local authorities rated Outstanding in every Ofsted criteria.

Our borough's Children's Services were recently inspected by Ofsted and received an Outstanding grade.

Since the last inspection in 2019, in which we were also graded Outstanding, several supportive innovations have been introduced by the Children and Families department to enable us to achieve this in every criteria:

Reach Out is the Council's in-house front door domestic abuse service which provides support to survivors and their children.

The family intervention team work with children, young people and their families to tackle issues such as child sexual exploitation, criminal exploitation, and missing children.

The youth intelligence hub holds weekly meetings with partners to plan responses to emerging issues, such as gang activity and child trafficking concerns.

The Care Leaver Covenant collaborates with care leavers to identify and deliver support such as arranging employment opportunities, housing, and driving lessons.

Pre-Birth social workers undertake pre-birth assessments of first-time mothers, mothers who have previously had children removed from their care, pregnant children looked after, and pregnant care leavers.



Our Children's Services celebrating their achievement

HEALTHY
Redbridge

Councillor Lloyd Jacob Duddridge, Cabinet Member for Children, Young People and Education, said



"This recognition is a testament to the dedication and efforts of our Children's Services teams. Despite already achieving an Outstanding rating from Ofsted, we continued to make improvements, which has resulted in us gaining this rating through every part of the service.

"We will always work to look after the wellbeing and development of children and young people in need of support and protection, to make sure all children in Redbridge have a safe, happy and fulfilling childhood."

Smiles, Support and Samosas

Pop into our community cafés, meet local people, and speak to Council or NHS staff who are there to help you.

A Hainault teenager grins at her scrabble opponents, each in their sixties, before laying down an impressive score. Excited children are crowded around several large tables, which have been pushed together to maximise their painting space. A handful of people are relaxing on comfy chairs around a large, homely rug, some sitting quietly, some gently chatting to each other, most drinking tea and eating samosas.

The community cafés in Hainault and Loxford aren't your standard NHS clinics or Council office



Amana, a Serving Humanity Foundation volunteer, shares good food and supports local people

receptions. But the services these two organisations provide are very much there and open to everyone.

People can pop in and meet new friends who also live nearby. But they can also get advice on housing, on benefits, or get their blood pressure checked. They might join in with some chair exercise classes, or simply sit and share some food or a cuppa with other local people.

Fatima, who attends the community café, said "Coming to the café and talking to other residents from different communities and ages is so refreshing. I received help with forms that I found very difficult to complete and help with so many other issues that my anxiety has gone since attending."

Pop in to our community cafés

Hainault Forest Community Centre
(next to the library), 100 Manford Way,
Ilford, Chigwell, IG7 4DF
Tuesdays from 10am to 12pm



Jennifer, Ashad and Hasna enjoy a competitive game of Scrabble



Aavya loves being creative with other people in the community

Loxford Polyclinic
417 Ilford Lane,
IG1 2SN
Sundays from 11.30am to 3pm

Spotlight on our superb local businesses

Local businesses play a vital role, serving the needs of our diverse community.

Our busy high streets are full of businesses offering a range of goods and services to suit the needs of our diverse community. Local businesses are the lifeline of our high streets and the heartbeat of our local economy, providing jobs and opportunities for local people.

We caught up with three businesses in different parts of the borough to find out what it takes to run a business in one of the most diverse communities in the capital.



Robins Pie and Mash

Robins Pie and Mash is a family business dating back almost 100 years. With branches in Basildon, Chelmsford, Romford, Chingford and Wanstead, the business has built up a good reputation for serving traditional pie and mash with liquor. Open seven days a week, regulars and new customers flock from near and far to taste freshly baked pies baked on site.

Tina has worked at the business for over 30 years and said,



“The high street has changed a lot over the years. I would like to think as a business we’ve survived this long because we’re a friendly business that understands our customers.”



Robins Pie and Mash is one of the oldest businesses on High Street, Wanstead, with roots that go back 100 years

Hisashi Coffee Company

Husband and wife duo, Salman and Noor, run the recently opened Hisashi Coffee Company in Ilford, serving speciality coffee, fresh juices, pastries, and grab and go lunch. After living and travelling through Japan, they wanted to bring Japanese coffee culture back to the UK, whilst creating a neutral space where people can work, as they both thought this was missing from the area.

Noor said,

“Redbridge is home. The community is truly what sets it apart. The diversity and richness in culture creates this wonderful melting pot of identities that makes Redbridge as inviting as it is.”



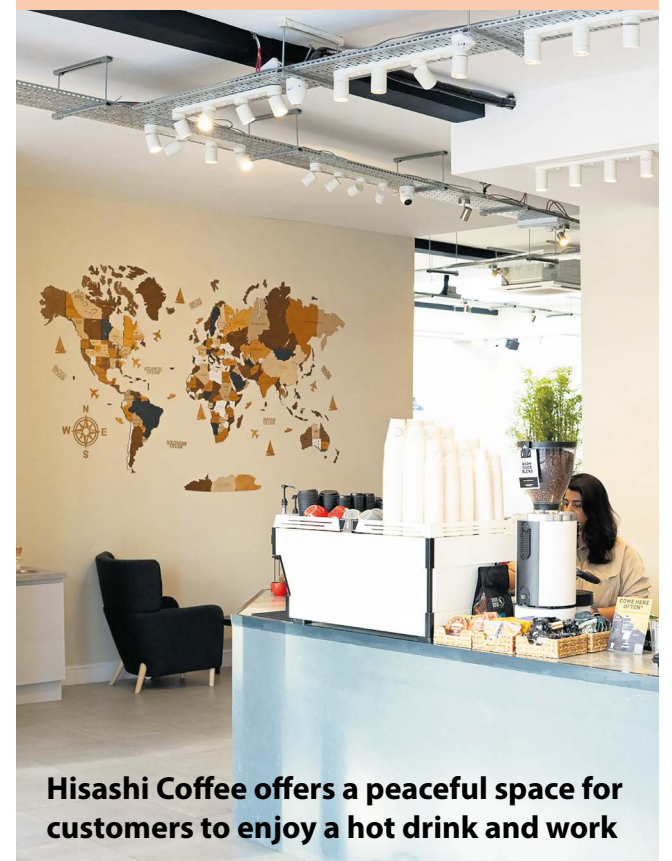
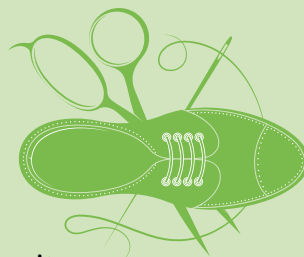
Quickie Heel Bar sells a range of products alongside its key cutting and shoe repair service

Quickie Heel Bar

Quickie Heel Bar is a family run shoe repair and key cutting shop. It has been based in Gants Hill for over 40 years and is run by second-generation owner, Vinay. Open six days per week, the business sells a wide range of hardware and homeware products alongside its key cutting and shoe repair service. Customers can pick up everything they need from new locks for doors to new laces for shoes.

Vinay said,

“The area has changed a lot from what it was 40 years ago. The local community is very diverse, which means we make sure our business is also diverse enough to suit the needs of the community we serve.”



Hisashi Coffee offers a peaceful space for customers to enjoy a hot drink and work

Join the 2024 Ilford Business Awards

Come and celebrate our local businesses at our 4th annual awards ceremony.

With voting firmly closed for our business awards, it's time to get your party clothes on and join us for what promises to be a glittering, fun-filled night celebrating our local businesses. Everyone in Redbridge is welcome, but make sure you get your ticket soon to avoid disappointment.



Special guests on the night include Leader of the Council, Cllr Kam Rai, and Jas Athwal, MP for Ilford South.

Secure your tickets by visiting www.inilford.com/events/2024-ilford-business-awards-registration-open or by scanning the QR code.



The 2024 Ilford Award promises to be a glitzy and glamorous affair

The awards dinner will be held on 5 December 2024 from 7pm to 11.30pm at the Coliseum Suite, 300-310 High Road, Ilford, IG1 1QW.

You'll be served a delicious three-course meal, winners in each category will be announced, and then celebrations will continue with live entertainment and music.

Redbridge is home to thousands of businesses, all helping to make our local economy tick, and all bringing value to our borough. The Ilford Business Awards recognises their importance to our communities, and the night is set to be a rightful celebration of all the hard work that goes into running a business.



Winners from our 2023 Business Awards ceremony

Support local businesses by shopping at Ilford Market

Buy locally in the centre of Ilford.

Support local businesses by buying fresh produce, hand-made crafts, and trying a variety of cuisines at our Ilford Market, which is in the heart of our bustling high street. Each stall now sports the new Ilford Market brand under a colourful and fresh new stand.

Ilford Market is open every day (excluding Wednesdays) from 9am to 6pm.

Whilst it's still light out at night, head to our night market on Monday 28 September, which will be open until 10pm.



Do you have unique products that you'd like to sell?

If you are a local market trader, you can grow your business further by applying for a trading spot. Simply get in touch with our friendly market coordinator, Cyril Bekoe, on 07498316461 or via email, at cyril@ilfordbid.com

Ilford Market has become an integral part of the town and is a great place to build connections with local businesses and the community.

For more information, please visit www.ilfordbid.com/ilford-market



Visit our new stalls on Ilford High Road

Helping to improve car security



Community safety calls on car company bosses to improve vehicle security.

The Council's Community Safety lead has challenged major car giant bosses to improve the security options fitted in their vehicles, ensuring they become less attractive targets for criminal gangs.

In an open letter, Cllr Khayer Chowdhury, Cabinet Member for Community Safety, has called on car manufacturers to take additional steps to improve the security options in all new vehicles.

PLAY YOUR PART

KEEP YOUR VEHICLE SAFE

Five things you can do to keep your car secure

- ✓ using a signal-blocking pouch for your car keys
- ✓ investing in a steering lock
- ✓ installing security measures on the driveway
- ✓ fitting an immobiliser and GPS tracking device
- ✓ considering safety features when purchasing a vehicle

Please visit www.met.police.uk/cp for further information




Cllr Chowdhury said,



“Car manufacturers need to up their game and come together and coordinate efforts to develop and install high-security features that criminals cannot surpass. By doing so, we can significantly reduce the incidents of car thefts, and enhance the safety and security of vehicle owners.

“As a council, we continue to support our police partners in tackling motor vehicle crime across Redbridge. However, the impact of these crimes on our community is significant and cannot be ignored. An obvious longer-term solution exists and is desperately needed, as police enforcement alone will not resolve this.”

New Police Hub in Woodford coming soon

A ground-breaking new Police Hub in Woodford, East London, will be opening this autumn, bringing frontline police back into local communities.

The Woodford Police Hub, a partnership project between Redbridge Council and the Metropolitan Police, is a significant step towards enhancing community safety. It will serve as the base for a

dedicated team of Safer Neighbourhood Officers, ensuring a swift and effective response to local issues such as antisocial behaviour, theft and vandalism.

The new Woodford Police Hub will provide a base for at least 20 police officers, who will work in partnership with council staff to prevent antisocial behaviour and support local people across the west of Redbridge.



The Leader of the Council, Cllr Kam Rai, recently visited the new Police Hub

The Leader of Redbridge Council, Cllr Kam Rai, recently visited the new hub in Woodford. He said,

“We know that community policing keeps our streets safe, provides reassurance and empowers local people to develop good relationships with our police officers.

“By working with partners in the Police and using council-owned spaces, like the offices in the Orchard Estate, we are bringing police back into the communities they serve. We eagerly anticipate the opening of the new hub at the start of autumn.”

Step into the future

Redbridge Council has joined forces with parents at two pilot schools to help ensure a smooth transition for pupils moving to secondary school this September.

Information was given to parents to help conversations at home, on how to handle difficult situations and when and how young people can seek help.

The transition to secondary school is a pivotal moment for any family. It signifies the shift from the familiar class teacher, to the thrill of 'big school', and the introduction of new travel arrangements, all of which bring about unfamiliar situations and challenges.

These resources have been created as part of our drive to reduce bullying and harassment, and encourage positive relationships.

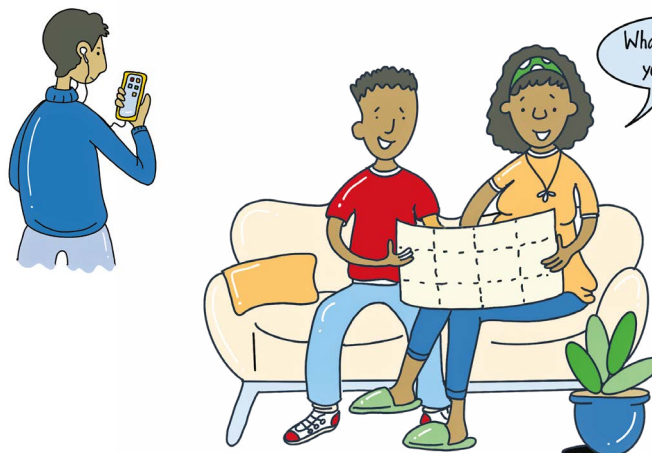
This is part of our This Has To Stop campaign. Find out more, at crimecommission.redbridge.gov.uk/thishastostop

THIS HAS TO STOP

Many parents worry about how their children will cope with the demands and are concerned about their safety – online and in real life.

The guides prompt families to consider various scenarios where children might need to make decisions about their actions.

The materials, which were supplied to all year six students at our pilot schools, cover a comprehensive range of topics. These include recognising harassment, dealing with pressure from older children, and accepting rejection.



SAFER
Redbridge

Let's delve into a scenario together. Take a moment to consider your response. What would you do?

One of the scenarios asks young people to consider what they would do if they saw a girl being harassed.

Should you intervene? Deciding the course of action is the topic for a family discussion.

Parents working with us have talked about young people listening to their inner voice. If something doesn't feel right, it probably isn't.

The resources allow children to develop skills to assess the situation and take action to keep themselves and others safe.

Beware of car park scammers

We're warning car park users to be alert following a series of incidents.

Individuals have been posing as Parking Enforcement Officers in some of the borough's car parks and on-street parking. These impostors falsely claim to be representatives of the Council and approach vulnerable vehicle users.

They either advise Blue Badge holders that they need to pay for parking when they do not, or offer to help others make payment. Remember, Blue Badge holders do not need to pay to park in Redbridge Council-operated car parks or on-street parking bays.

We recently decommissioned the parking machines in our car park, so that you cannot use the machines to pay by card or cash.

You can still pay for parking using the RingGo app or PayPoint.

Please report any fraudulent incidents to the Council's Corporate Fraud Team on 0800 633 5267.

You can pay for parking via the RingGo app



Managing through the rising cost of living

Help is available for you to take control of your household finances, increase your income and reduce your costs.



Taking control of your finances

If you are having trouble paying your rent, mortgage or council tax bills, it's important to address these immediately. Contact your mortgage lender or landlord to explain the situation. Contact the Council about council tax bills.

Specialist debt advisers are available for free. They can help you get on top of your debts and make a budget. You can get support from the kiosk at Redbridge Central Library, or you can arrange for someone to call you from MoneyHelper adviser.moneyhelper.org.uk

Controlling your spending is a key part of being financially stronger. You can find courses to build your confidence in household budgeting, at www.moneyhelper.org.uk/en/everyday-money/budgeting/budget-planner



Finding a job

You may be ready to find a job now, or you may need to do some training first. If you need advice on where to start, register with Work Redbridge. They will help you understand what training you need to get into a new job, and can direct you to the best place.



They provide support with writing your CV, interview skills and can support you into work.

Register online, at <https://costofliving.redbridge.gov.uk/help-finding-a-job/>

The community grocery store in Ilford has food to fill your cupboards at 80 per cent cheaper than recommended retail prices



Reducing your costs

Did you know, some people are eligible for a social tariff, which is a discount on their broadband and water bill? Ask your energy provider about social tariffs.

The Ilford Community Grocery sells groceries at an 80 per cent discount. It can be found at 25–29 Clements Road, Ilford.

The TCL Reuse Centre sells refurbished white goods, electronic items and furniture at a reduced price, to help you save on the essentials. They will deliver the goods to you.

Find them at Unit 1, 330–348 Uphall Road, Ilford, IG1 2JJ.

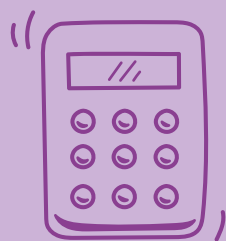
Or find them online, at www.tclreuse.org

Increasing your income

Every year, money that local people are entitled to goes unclaimed in Redbridge. We want those who are entitled to, and who need this money, to claim it.

These include:

- + Pension Credit
- + Healthy Start Vouchers
- + Universal Credit



Check whether you're entitled to these benefits using our benefit calculator, at <https://costofliving.redbridge.gov.uk/welfare-benefits-advice/>



Knock knock, who's there?

Your neighbours are having a street party!

Summer street parties are the icing on the cake for Redbridge communities.

The Mayor joined in the fun at a street party organized by the Deaf Empowerment Society



**The Leader
of the Council,
Cllr Kam Rai, said**



"Neighbours and communities had such a wonderful time celebrating the King's Coronation last year. It was marvellous to see communities come together once again to organise street parties around the borough. I was delighted to join in the celebrations, which brought so many people together to make new connections and build stronger communities."

"Local people asked us to help make this an annual event, so we waived the usual fees for arranging a street closure, and provided grant funds for voluntary and community organisations to organise celebrations."

"We would like to give a huge thank you to all the volunteers, residents, organisations and groups who organised so many fantastic street parties. It has been wonderful to see our communities come together to celebrate and support one another."

Following the success of street parties that celebrated the late Queen's Platinum Jubilee and the King's Coronation, people across the borough came together once again to host parties on their streets. With a summer full of sports, including the Summer Olympics, Euro 2024, and Wimbledon, neighbours from over 20 streets celebrated together.

Neighbourhoods across the borough were decorated with bunting and streamers, and the roads were lined with tables, chairs, and matching napkins and tablecloths. Music and laughter filled the air as residents of all ages enjoyed cakes, dancing, and fun with their neighbours.

In Barkingside, the Empowering Deaf Society organized a street party at St Laurence Church. Residents soaked up the sunny weather and enjoyed live entertainment from African and Indian dancers who are deaf. Children also had a fantastic day out with amazing activities, including a bouncy castle and face painting.

The society also grows vegetables in the allotment at St Laurence's Church Hall. After spending months growing, vegetables like potatoes, green beans, tomatoes, and butternut squash were handed out for free at the street party.

Supporting the move to a long-term home

New homes will help those most in need into more stable, settled accommodation.

In Redbridge, our priority is to help those in need of housing into safe, well maintained, sustainable and secure homes they can live in, long-term.

There are more than 3,000 households living in temporary accommodation in Redbridge, and 8,000 people on our council housing waiting list. We are building homes across the borough for local people, but even with these new developments, there just aren't enough homes for everyone who needs one.

We have therefore had to look further afield and buy homes in other areas, to give families the accommodation and the stability they need.

Vanessa was homeless, from Redbridge and benefited from this support. We were able to secure accommodation for Vanessa in a different area and she moved in two days later. Since then, through ongoing support, Vanessa has found a job and her adult daughter has joined her.

Vanessa said, "I have a house and full-time job. My daughter has come to live with me as she is studying at university. I am eternally grateful for all the support and help I have received."



We're purchasing affordable homes for rent outside of the borough

We're building new homes in the borough

Another 26 new homes have been completed as part of our commitment to provide affordable homes for local people.

We have completed another housing development, which consists of 26 brand new homes for local people on the housing waiting list. By the end of 2025, we will have built 600 new homes, consisting of a mixture of one, two, three and four-bedroom houses and flats. These are all being built on existing council-owned sites across the borough. Some have front and rear gardens, driveways, and many have green communal areas.

The newest homes have been built on our two development sites, Shakespeare Square and Mossford Mews. These properties will be made available for those on our housing waiting list and will provide local families with a long-term stable and secure place they can call home.

For more information about the homes we're building across the borough, visit engage.redbridge.gov.uk/hub-page/affordable-homes-programme



The recently completed Mossford Mews consists of five, two-bedroom bungalows and one three-bedroom two storey house



Cllr Vanisha Solanki, Deputy Leader and Cabinet Member for Housing and Homelessness, said

"Our priority is to help those most in need of housing into safe, well maintained and secure homes they can live in for many years to come.

"Mossford Mews is part of our building programme, which will provide hundreds of homes for local people.

"Another 103 households will get the keys and open the door to their new home in another development, Little Gearies, in the coming months.

"We're supporting local people to have a comfortable, safe and affordable place in which to live."

CALLING ALL LANDLORDS!

Selective Licensing Schemes

If you're a Landlord or Agent and you operate any rented property, you may need to apply for a property licence.

Redbridge Council has two selective licensing schemes in place. Selective Scheme 3 (2 wards) has been in operation since **1 November 2023** and applies to rented properties within Ilford Town and Valentines wards.

Selective Scheme 4 (15 wards) came into force on **Monday 8 April 2024**. The wards affected are: Aldborough, Barkingside, Chadwell, Churchfields, Clementswood, Cranbrook, Fairlop, Goodmayes, Hainault, Loxford, Mayfield, Newbury, Seven Kings, South Woodford and Wanstead Village.

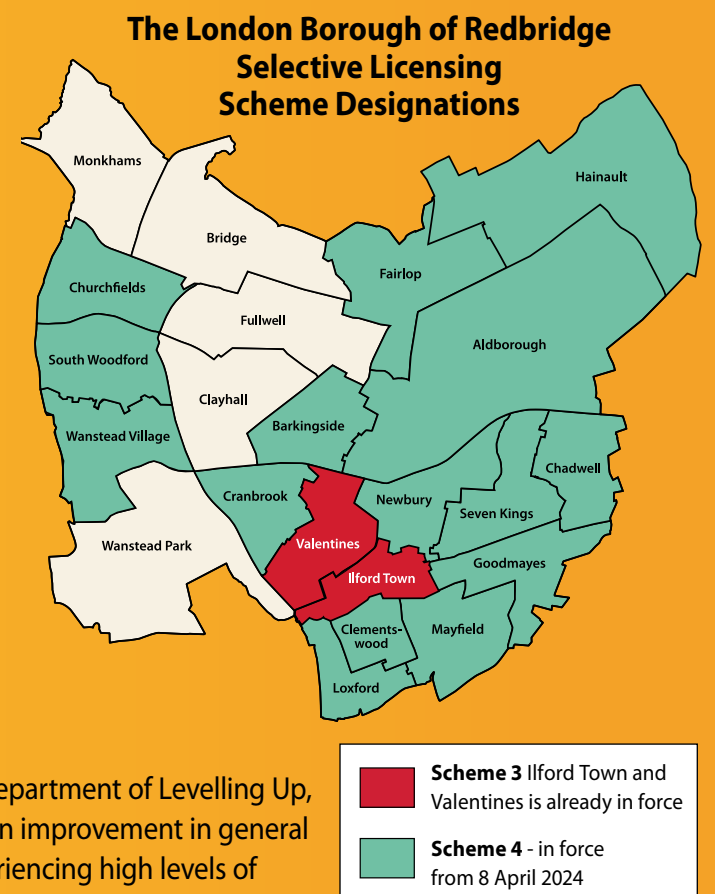
These schemes require landlords or agents of most private rented properties in these areas to apply for a selective property licence. To apply, visit <https://propertylicensing.redbridge.gov.uk/>

If you already have a selective licence for a property in these wards and it is still in date, the licence will remain in force until the expiry date shown on the licence.

These new schemes were introduced after a full public consultation and confirmation by the Department of Levelling Up, Housing and Communities (DLUHC), who were satisfied that these schemes will contribute to an improvement in general housing conditions in the areas, and that private rented housing in the designated area is experiencing high levels of deprivation, high levels of migration, and significant and persistent antisocial behaviour.

Failing to get a property licence can result in receiving a civil penalty of up to **£30,000** or prosecution in Court, where the fine is **unlimited**. Additionally, not having a property licence may prevent you from evicting tenants using the 'section 21' process. Tenants may also be able to claim back up to 12 months' rent from you, via a **Rent Repayment Order (RRO)**. The Council will normally publish any prosecutions, enforcement, or legal action in the press and update the GLA's public Rogue Landlord and Agent Checker and government intelligence databases.

To find out more information and check whether your rental property needs a Selective or any other type of Licence, visit www.redbridge.gov.uk/privaterentals



Scan the QR code to see the Public Notice for Scheme 4



Additional HMO Licensing Scheme

Redbridge Council approved a new five-year Additional Licensing scheme for small Houses in Multiple Occupation (HMO) across the whole borough. Additional HMO property licensing is now a legal requirement, as of **Monday 18 September 2023 until 17 September 2028**.

This means that any property which is rented to three or four occupiers forming two or more households that share (or lack) a toilet, personal washing facilities or cooking facilities needs to have an HMO Licence.



This includes certain converted blocks of flats (known as Section 257 HMOs), but only where all accommodation units are privately rented, and the building and accommodation units are in the same ownership or control. This includes buildings within mixed use developments or above non-residential premises.

The introduction of this new HMO Licensing Scheme comes after a full public consultation. Overall, it was found that there are significant issues such as poor housing conditions, ineffective management, crime, and antisocial behaviour persisting within HMOs in the borough.

For more information on whether your rental property needs an Additional (HMO) Licence, visit www.redbridge.gov.uk/housing/private-rentals



Scan the QR code to see the Public Notice



Local people boost biodiversity



Communities are planting flowers on their streets to help bees, birds and other wildlife thrive.

Beautiful mini-gardens are popping up all over the borough thanks to community-minded locals who adopted all the tree pits on their street, along with nearby plant growth areas, and then planted wildflower seeds in them. Tree pits are the soil area by the base of the tree, and they're perfect for planting.

Pollinator Pathway roads provide a corridor of pesticide-free plants in tree pits, that connect different areas of habitat, encouraging pollinators such as bees, to travel between them to access the food and shelter that they need.

So far, there are 11 streets signed up as Pollinator Pathways in the borough, with more in the pipeline – and yours could be one of them.

The borough-wide initiative is also a fun and interactive way to bring neighbours together, create new friendships, and make streets more attractive and colourful.

Karen Myers, from Wanstead, is part of a local Pollinator Pathway road. She said "Being part of the scheme has really brought our road together, and we often get lovely comments from people walking down it. It's also a little haven for wildlife and makes it a nice place for us to live."

Applications are now open all year round for your street to become a Pollinator Pathway.

For more details or to apply, visit www.redbridge.gov.uk/our-streets/adopt-a-tree-pit-and-pollinator-pathways/



Local people are teaming up to help make their Pollinator Pathway roads a success

How to transform your life, through adult education

Redbridge resident transitions from a stay-at-home mum to owning her own business, thanks to Redbridge Institute of Adult Education.

At 30 years of age, Sonal Singh got out of her comfort zone as a full-time stay-at-home mum of two, and embarked on her educational journey at our borough's adult education service, Redbridge Institute, which has been rated Outstanding by Ofsted.

Sonal's inspirational journey started with taking a course in Childcare (Early Years) Level 1, which then led her to complete Level 2 and Level 3.

Sonal said "When I started my Level 1, I was extremely nervous as I hadn't been in a formal classroom since I was at school. My welcoming tutor instantly put me at ease.

"I quickly realised I was on the right pathway, because my uncertainty rapidly turned to excitement, and I began to dream about one day owning my own nursery.

"Studying with two small children wasn't easy – when I first enrolled at Redbridge my daughter was four and a half, and my son was only three – but I was extremely lucky to have an incredible support network around me.

"Following the completion of my studies and gaining valuable work experience at several nurseries, I realised my ultimate dream and opened the doors to my very own nursery in Goodmayes.

"Motherhood is hard, but with the right support and some ambition, change can happen."

Sonal was able to open her own nursery after studying at Redbridge Institute



Let us find the *perfect* venue for you...

Venues for every occasion:

Weddings • Parties • Team building
Meetings • Conferences • Wakes

Cold buffet & beverage offers available



Scan the QR Code
and enquire about our venues.
Find out more at: visionrcl.org.uk

New Venues for hire at
Redbridge Cycling Centre &
Redbridge Drama Centre

Vision
Redbridge Culture & Leisure

RIAE Redbridge Institute
of Adult Education
Transforming lives through adult education

YOUR DREAM STARTS HERE

ENROL TODAY

Careers | Qualifications | Skills for life

REDBRIDGE-IAE.AC.UK

SONAL SINGH, LEARNER - CHILDCARE COURSE, NOW NURSERY OWNER

London Borough of
Redbridge

MAYOR OF LONDON



Ofsted
Outstanding
Provider

VISION REDBRIDGE CULTURE AND LEISURE PRESENTS
A REDBRIDGE CREATES THEATRE COMPANY PRODUCTION OF

A Pantomime Adventure Beyond the Clouds!

JACK AND THE BEANSTALK

22 NOV 2024 - 5 JAN 2025

Kenneth More Theatre, Ilford

vrcl.uk/jackandthebeanstalk | 020 8708 8800

